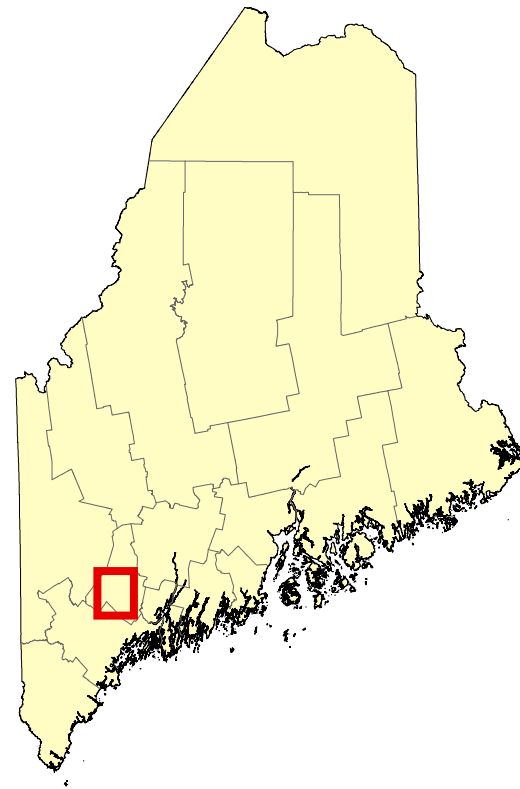


Beginning with Habitat (BwH)
equips Maine communities, landowners, and
conservation partners with tools to protect, restore, and
connect important habitats and ecosystems in a changing
climate.
www.beginningwithhabitat.org

High Value Plant & Animal Habitats Auburn

This map is nonregulatory and is intended for planning purposes only



Town of Interest

Organized Towns

Developed Impervious surfaces such as roads and buildings.

Rare or Endangered Wildlife*

Endangered, Threatened, or Special Concern Species Mapped observations of rare wildlife species.

Rare or Exemplary Plants and Natural Communities

Rare Plant Locations Known rare, threatened, or endangered plant occurrences are based on field observations.

Rare and Exemplary Natural Communities Mapped features are based on field surveys and aerial photo interpretation.

Significant Wildlife Habitat

Significant Vernal Pools Surveyed pool depressions used for breeding by amphibians and other indicator species and that portion of the critical terrestrial habitat within 250 ft of the spring or fall high water mark.

Deer Wintering Area Forested area possibly used by deer for shelter during periods of deep snow and cold temperatures.

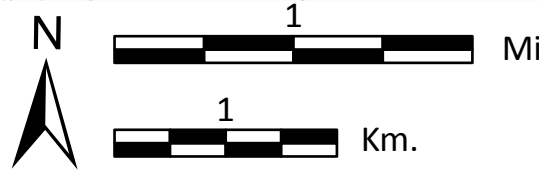
Inland Waterfowl and Wading Bird Habitats Breeding, migrating/staging, or wintering areas for inland waterfowl or breeding, feeding, loafing, migrating, or roosting areas for wading birds.

**Species and habitat labels are provided within and proximate to the town of interest.*

Contact the **Environmental Review** Team at the Maine Department of Inland Fisheries and Wildlife for information on fisheries, wildlife, and critical habitat resources related to potential development activities and regulatory processes. IFWEnvironmentalreview@maine.gov

TOWN BOUNDARIES - ME Office of GIS (2021)
HYDROLOGY - U.S. Geological Survey National Hydrography Dataset(2016)
DEVELOPED - NOAA Coastal Change Analysis Program (C-CAP) (2022)

RARE, ESSENTIAL & SIGNIFICANT WILDLIFE HABITATS - ME Office of GIS, ME Dep. of Inland Fisheries & Wildlife (2024)
RARE NATURAL COMMUNITIES & PLANTS - ME Natural Areas Pgm (2024)



Scale: 1:34,000
Projection: UTM 19N
Datum: NAD 1983



Map Prepared by Maine
Department of Inland
Fisheries & Wildlife
April 2025

